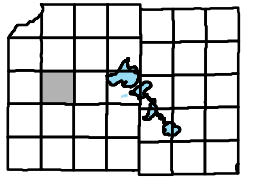
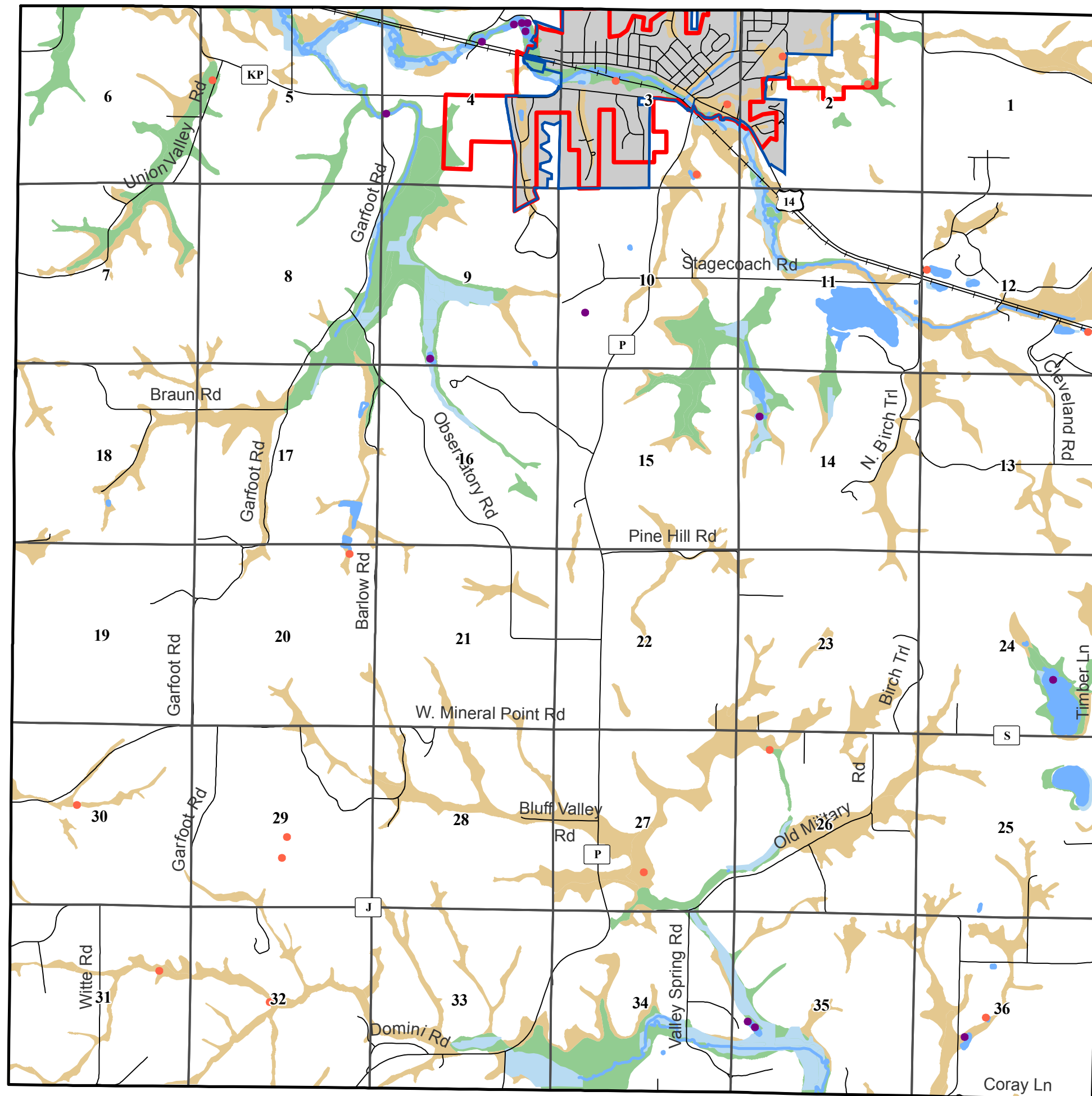


# Town of Cross Plains



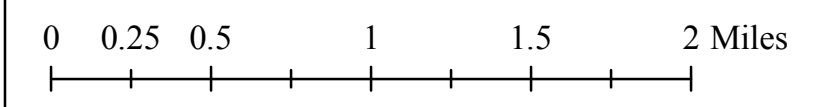
Map 20: Hydric Soils & Wetlands

**DRAFT**



- Wetland smaller than 2 acres
- Excavated pond smaller than 2 acres
- Wetlands
- Non-hydric soils likely to contain hydric inclusions
- Hydric soils
- Cross Plains Village Boundary
- Cross Plains Urban Service Area
- Section Boundary
- Railroad

April, 2007



Source Info:  
 Cross Plains Village Boundary: 01/2007 (DCPD)  
 Hydric Soils: Digital Soils (NRCS, LCD, LICGF)  
 Service Area: 04/2007 (DCCAPD)  
 Wetlands: 1997, (WIDNR)

This map was prepared through the Dane County Department of Planning and Development in conjunction with the Dane County Land & Water Resources Department, Dane County Land Information Office and the Dane County Community Analysis & Planning Division.