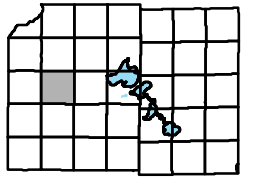


Town of Cross Plains



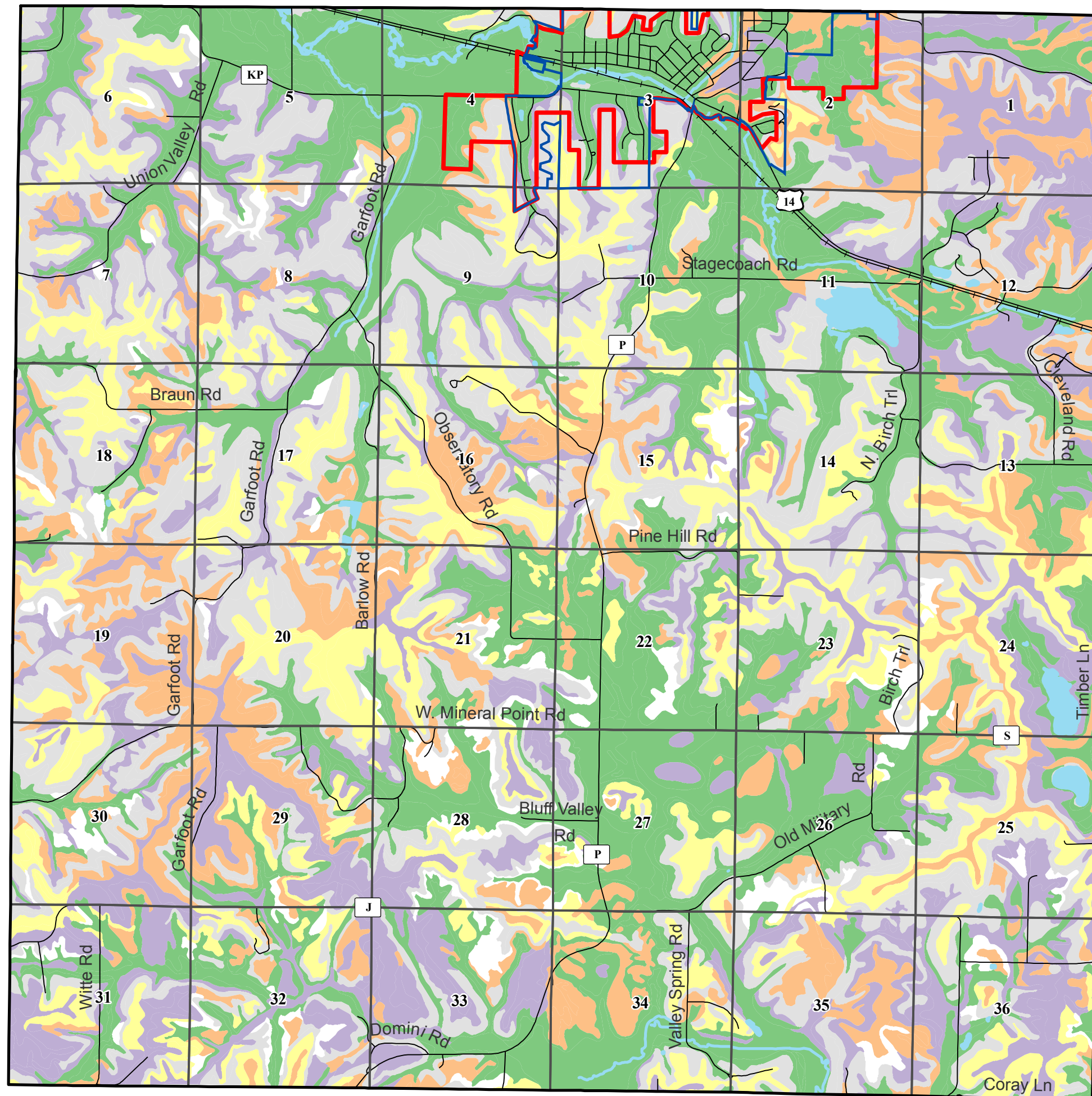
Map 17: Soil Productivity for Soybeans

DRAFT

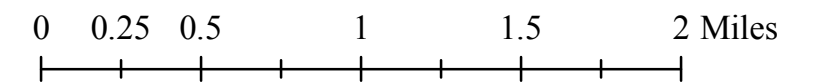
Soil Productivity for Soybeans

Estimated Bushels per acre

- 45 or greater
- 35 - 45
- 25 - 35
- 25 or less
- No data available
- Cross Plains Village Boundary
- Cross Plains Urban Service Area
- Section Boundary
- Railroad



April, 2007



Source Info:
 Cross Plains Village Boundary: 01/07, (DCPD)
 Service Areas: 04/07, (DCPD)
 Soils: 2000, (DCLIO)

This map was prepared through the Dane County Department of Planning and Development in conjunction with the Dane County Land & Water Resources Department, Dane County Land Information Office and the Dane County Community Analysis & Planning Division.